



# WILD PLUM CENTER'S ANNUAL REPORT 2020-2021



# BUILDING TOGETHER

**WILD  
PLUM  
CENTER**  
FOR YOUNG  
CHILDREN &  
FAMILIES

Nourishing Minds.  
GROWING FUTURES.

[WWW.WILDPLUMCENTER.ORG](http://WWW.WILDPLUMCENTER.ORG)





## **CONTENTS:**

Message from the Executive Director.....	3
Services.....	4
Health and Nutrition.....	5
Preschool Outcomes.....	6
Infant/Toddler Outcomes.....	7
Family Outcomes.....	8
Transitions.....	9
Demographics.....	10
Federal Reports.....	11
Parent Involvement.....	12
Community Partnerships.....	13
Financials.....	14- 15
Budget Information.....	16
Board of Directors.....	17



## A MESSAGE FROM THE EXECUTIVE DIRECTOR:

Despite the hardships of the 2020-2021 School Year, one can only marvel at the strength of our program, staff, families and community. Together, we were able to adapt and overcome the seemingly endless obstacles that we faced as we strived to enter the school year with a sense of normalcy.

The low-income families we serve were still with great need for the most essential of items due to the pandemic. Wild Plum Center recognizes that in order for our families and students to be ready to learn, it is imperative that their most basic of needs be met. We turned to our donor community to help us provide the hundreds of families we serve with the tools they needed in order to show up to school each day. From gas gift cards, pantry staples, diaper and formula stockpiles, facemasks, to hand sanitizers we as a community worked together to ensure that the cost of the pandemic did not negatively affect the success of the families we serve.

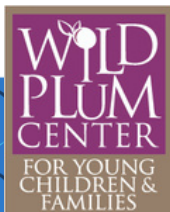
Additionally, we were encouraged by the diverse grant funding sources we received to support our efforts during the pandemic and were able to reopen our program as soon as it was permissible and keep every member of our staff employed.

Since our Preschoolers were unable to attend the last two months of the 2019-2020 School Year due to CDC and Boulder Public Health guidelines and school closures, we launched our first ever summer program to support 4 year olds with a STEAM focused curriculum as they prepared to enter Kindergarten.

Because of the summer program's success, we were inspired to innovate new approaches to bridging the Learning Gap and partnered with Mile High United Way and the City of Longmont to initiate funding for a Mobile Classroom. The Mobile Classroom will be a classroom on wheels that is able to go to our families' neighborhoods and host both the student and parent in a classroom environment with bilingual teachers. We look forward to utilizing this additional classroom to expand and diversify our summer programming, monthly socializations with home-based families and community outreach.

The 2020-2021 school year might not have been what we envisioned, but its nuances paved the path for what has turned out to be a successful year full of adaptation, momentum, unity and encouragement.

  
**AMY OGILVIE**





Quality early childhood education is one of the most effective ways to influence the path of a child and their family. We partner with families so that parents are empowered to participate in their child's education and wellness. In addition to classroom programs, our Family Specialists conduct in-home visits where they can get to know a child's individual needs and address strengths and weaknesses within the family. This kind of attention to detail and a caring approach is what drives our success.

#### **INFANT/TODDLER PROGRAM- 0-3 years**

Developmental services are provided to 0-3 year old children from low-income families, including prenatal and post-partum support for pregnant women and children with disabilities. Parents/guardians may select from either a home-based or center-based service model, each provided at 100% scholarship. All services are offered in both English and Spanish.

- Home-based services involve Family Mentors working with parents one-on-one in a home setting for 1.5 hours each week. This option is supplemented by group-delivered parent education and parent/child socialization activities with family mentors.
- Center-based services provide a curriculum-based setting for children while parents work or go to school. Service elements are intended to address any and all aspects of need within a child's life, allowing for significant developmental experiences.

#### **PRESCHOOL PROGRAMS- 3-5 years**

A comprehensive preschool program is available to low-income 3-5 year olds including children with disabilities. Preschool service elements mirror those of the Infant/Toddler Program, addressing all aspects of need and allowing for meaningful and impactful educational experiences.

#### **CREATIVE CURRICULUM**

Research-based Creative Curriculum is used in all 16 Wild Plum classrooms, including Infant/Toddler. Creative Curriculum focuses on all areas of children's growth:

- Physical
- Cognitive
- Social/emotional
- Language and Literacy
- Approaches to Learning

Creative Curriculum allows each teacher to incorporate and address the specific interests, characteristics, and needs of the children and families in their class. Teachers integrate a study anywhere from a week to a month and immerse students in that topic through classroom materials, books, and activities- all sparked by student interests.

#### **FAMILY ENGAGEMENT**

Wild Plum Center regards parents as the first, the best, and most important teachers of their children. Wild Plum Center offers numerous opportunities to foster the health and well-being of program children and families, including:

- Mental health services
- Family support and case management
- Parent education and socialization





# HEALTH AND NUTRITION

Wild Plum Center knows that children need proper nutrition throughout the day so that their brains and bodies can function properly and are able to engage.

Using the USDA MyPlate in addition to working with the Child and Adult Care Food Program, cooks prepare meals each day for all of the classrooms.

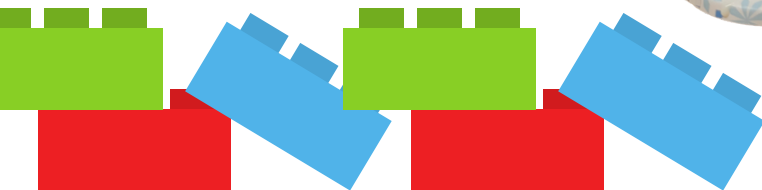
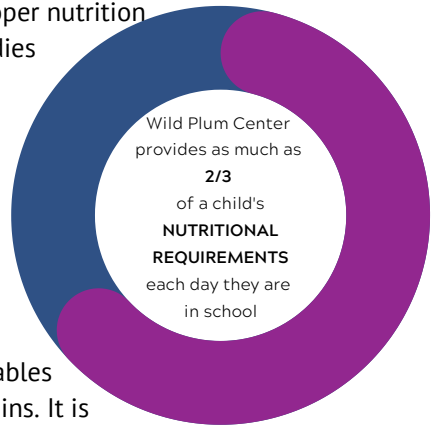
Breakfast includes milk, fruit and whole grains. Lunch consists of milk, protein, fruit and vegetables and all snacks include milk, fruit and whole grains. It is important that our students receive the nourishment they need in order to grow, learn and be successful which is why we are glad to provide 2/3 of their nutritional needs every day that they are in the classroom at no-cost to the family.

Wild Plum Center works with parents and caregivers to access healthcare screenings and services for their children. Our health services include:

- Hearing and vision screenings
- Well-child support, including care and vaccines
- Prenatal, postpartum, and breastfeeding support and education
- Nutrition information for the entire family, such as helping families access supplemental food items
- Prenatal and postpartum mental health screenings

We also provide referrals to health providers and other community resources as appropriate and help families understand and navigate complicated medical situations to ensure they get proper treatment.

Additionally, all Wild Plum parents can participate in First Aid and CPR classes at no cost to them.



# PRESCHOOL OUTCOMES:

Wild Plum Center uses the Teaching Strategies Gold assessment system for all children. In the fall, winter, and spring the teachers compare each child's skills and behaviors to research-based indicators of learning and development. These comparisons indicate for each domain, whether a child's skills and behaviors are below, at, or above expectations for their age.

The graph shows the percentage of children meeting or exceeding expectation in areas of targeted skills when they started at Wild Plum Center in the fall of 2020 and where they were at the final Spring checkpoint in 2021.

Children in all categories showed improvement from checkpoint 1 to 2, and there was significant growth in children meeting expectations overall.

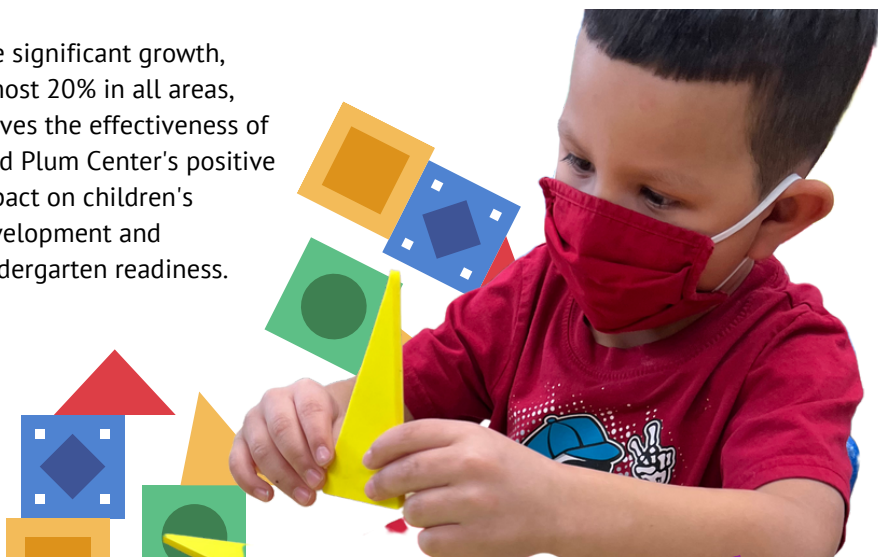
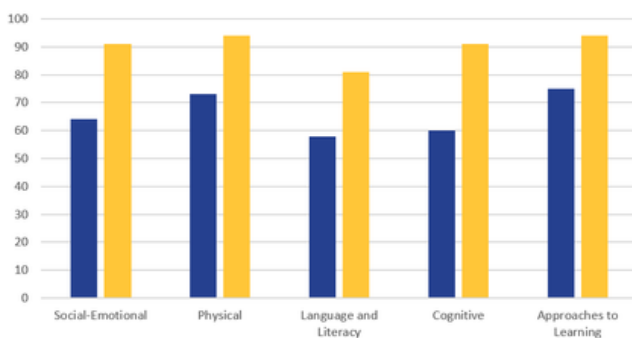
Numbers of children meeting and exceeding expectations on average were greater than 80% in all domains; social/emotional, physical, literacy, approaches to learning and cognitive.

The significant growth, almost 20% in all areas, proves the effectiveness of Wild Plum Center's positive impact on children's development and kindergarten readiness.

## Percentage of Students Meeting and Exceeding Expectations at Spring 2021 Checkpoint

*English/Spanish Speaking*

*Ages 3-5 years*

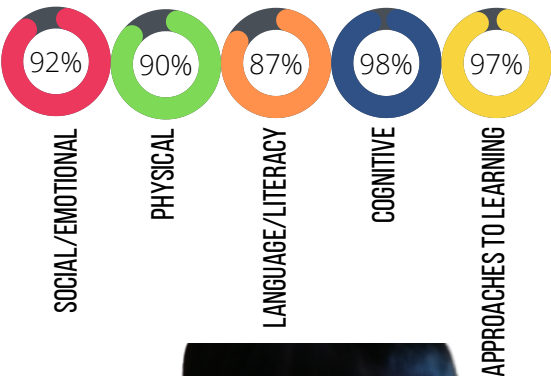


# INFANT/TODDLER OUTCOMES:

Young children engage in learning in individually unique ways, which is why Wild Plum individualizes care and nurturing, intentionally teaching to a child's strengths and preferences. Through this approach, Infant/Toddler teachers and home visitors expose children to an array of learning opportunities designed to improve growth in each of the five developmental domains.

Wild Plum uses data to inform instruction allowing us to understand how our efforts are working and the developmental areas in which Wild Plum children may need more support. Data is gathered in the areas of social-emotional, physical, language, cognitive, and literacy with a subset of data related to approaches to learning being gathered in the cognitive development area.

**Percentage of Students Meeting and Exceeding Expectations at Spring 2021 Checkpoint**  
*English/Spanish Speaking*  
*Ages 0-3 years*



The pie charts above show the percentages of Wild Plum children meeting and exceeding expectations compared to children of the same age nationwide. At the last available checkpoint, the Wild Plum Early Head Start children are shown to be on track developmentally.



# FAMILY OUTCOMES:

Wild Plum believes that strong family engagement leads to strong child outcomes.

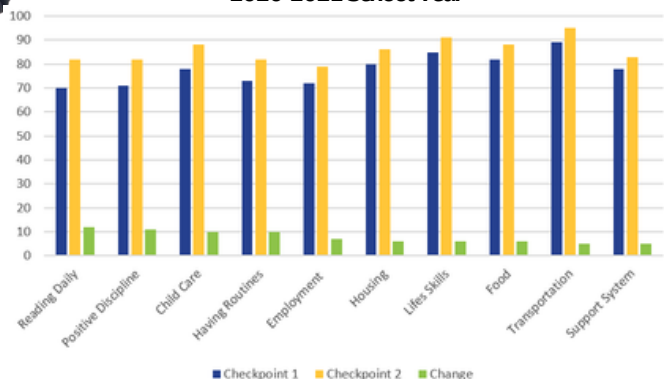
In addition to monitoring children's progress, Wild Plum Center assesses self-sufficiency, connections to peers and community, and parent/child relationships. The 21 areas of measure include:

- Reading Daily
- Positive Discipline
- Child Care
- Having Routines
- Employment
- Housing
- Life Skills
- Volunteering
- Language Rich Experiences
- Health Care Access
- Child Safety
- Food
- Transportation
- Money Management
- Criminal Justice System
- Substance Use
- Support System
- Physical Health
- Relationship Safety
- Mental Health
- Adult Education

Every Wild Plum Center family participates in a Self-Sufficiency Analysis, as well as a review of progress made toward goals as outlined in an individualized Family Partnership Agreement.

The graph below shows outcomes from the analysis, which shows increases in several areas of self-sufficiency for program families during the 2020-2021 school year.

**Family Outcomes  
2020-2021 School Year**



# TRANSITIONS:

All transitions are opportunities for children's growth, as they lay the foundation on which to develop the skills that are necessary for weathering change throughout life. Transitions from Early Head Start to Head Start and Head Start to kindergarten are crucial times for decision-making about children's services. The transition process ensures service continuity, reduces family disruptions, prepares children for their program placements, and meets legal requirements (IDEA and ADA).

Our Transition Plan is designed to help children who are transitioning from one setting to the next. In order to make these transitions as seamless as possible, Wild Plum Center staff maintains close and consistent contact with the child and family through every step of the process. The transition process is individualized for each child and family.

## **Transition plan for Infant/Toddler:**

For children transitioning from the home-based and center-based programs, there are several conversations that take place between Wild Plum Center staff and parents that begin six months in advance of the actual transition.

First, the family is educated on the community preschool options available to them, including preschool. If the family selects and qualifies for preschool, staff begins to prepare the child for school by utilizing a "transition kit" that includes materials and supplies to help familiarize him/her to the preschool classroom. Infant/toddler staff, together with parents, meet in the classroom for an orientation and exchange of necessary paperwork.

## **Transition plan for 4 and 5 year olds going to kindergarten:**

Throughout the school year, we have on-going discussions about kindergarten with children and their parents. Wild Plum Center staff talk with student's families about the registration process, support them through enrollment, fill out scholarship requests, help with translations, and encourage parents to continue to advocate for their child's education. Transition meetings with the school district are scheduled as needed and families are encouraged to visit the new school.

In 2020, Wild Plum Center offered their first ever summer program to further assist children transitioning to Kindergarten. This program was focused on STEAM learning and provided students an opportunity to bridge any learning gap that might have resulted from early pandemic school closures.





# DEMOGRAPHICS

RESULTS OF MOST  
RECENT AUDIT:  
In 2020-2021  
**ZERO**  
concerns were  
identified

## Infant/Toddler

Enrollment year: September 2020 - August 2021

**TOTAL CUMULATIVE ENROLLMENT:  
105 CHILDREN FROM 82 FAMILIES**

### NUMBER OF CHILDREN

Under one year old:	27	EHS funded enrollment:	68
1 year old:	25	Center-based, 5 days a week:	32
2 years old:	34	Home-based:	36
3 years old:	12		
Pregnant Women:	7		

## Preschool

Enrollment year: September 2020 - August 2021

**TOTAL CUMULATIVE ENROLLMENT:  
121 CHILDREN FROM 113 FAMILIES**

### NUMBER OF CHILDREN

2 years old:	6	Head Start funded enrollment:	155
3 years old:	58		
4 years old:	57		



# FEDERAL REPORTS

## TOTAL AMOUNT OF PUBLIC AND PRIVATE FUNDS RECEIVED AND AMOUNT FROM EACH SOURCE:

Federal HHS	2,837,929.31
City of Longmont	109,104.32
Colorado Preschool Program (SVCC)	248,320.00
Boulder County Human Services	66,188.00
Child Care Assistance Program	502,073.54
Temple Hoyne Buell Foundation	75,000.00
Longmont Community Foundation	7,373.95
Direct Public Support	72,110.12
Interest Income	878.86
General Operating Grants-Non-Designated	123,896.43
General Operating-Designated	123,894.84
Miscellaneous Income	16,530.26
Miscellaneous Clearing Account	27,715.67
In Kind	646,721.00
USDA Income	108,898.75
Erate Reimbursement	24,850.12

**TOTAL PUBLIC AND PRIVATE FUNDS RECEIVED: 4,892,424.65**

## PERCENTAGE OF ELIGIBLE CHILDREN SERVED:

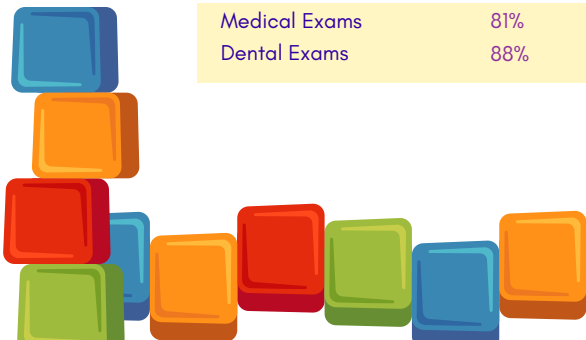
	Infant/Toddler	Preschool
Below Income	100%	98%
Receiving Public Assistance	100%	100%
Homeless	26%	23%
Over-Income	0%	2%
Foster Care	0%	0%

## PERCENTAGE OF ENROLLED CHILDREN RECEIVING MEDICAL AND DENTAL EXAMS:

	Infant/Toddler	Preschool
Medical Exams	81%	81%
Dental Exams	88%	93%

AVERAGE MONTHLY ENROLLMENT FOR BOTH HEAD START AND EARLY HEAD START: 80%\*

\*referring to average # enrolled, class sizes were reduced for mandated requirements



# PARENT INVOLVEMENT

Wild Plum Center makes every effort to support parents through their own journeys in parenthood and paths to self-sufficiency and lifelong learning. We create many opportunities for all parents and caregivers of children who are enrolled in our programs to become more engaged with their children and involved with their education.

These include:

- Participation in Parent Policy Council. This is one of Wild Plum Center's two governing bodies.
- Participation on the Health Advisory Committee. This is a group of medical and healthcare professionals and parents who work to ensure that all Wild Plum Center children receive the health care they need.
- Parent/Child activities. These events include parent educational activities and workshops, gatherings in the local parks, dance performances, visits to museums and children's fun centers, recreation centers, and other community events.
- Parenting Classes teach skills and strategies to raise children who are happy, well-behaved, have good relationships, and are successful in school and in life.
- Kindergarten transition support.
- In-home learning opportunities.
- Summer school kit provisions.
- Conscious Discipline Parent Nights



# COMMUNITY PARTNERSHIPS

Wild Plum Center has a long history of effective collaborative relationships with a variety of local non-profits, Boulder County/Colorado organizations, and foundations.

## NON-PROFITS AND ORGANIZATIONS

Ace Hardware  
Amazon  
Bridge Center for Play Therapy  
Burg Simpson  
Early Childhood Health Outdoors  
EcoCycle  
Independent Financial  
King Soopers  
Kiwanis Club of Longmont  
Knit & Purl Group  
Longmont Museum  
Longmont Yarn Shoppe  
Laurell Richey Realty  
Plum Organics  
Precious Child  
Rotary Club of Longmont Twin Peaks  
Silver Creek Cheer Team  
Silver Creek Leadership Academy  
Trans Martial Arts  
Tinkermill  
WOW Museum  
Xilinx

## FUNDERS & FOUNDATIONS

Anschutz Fund  
Boulder Community Foundation  
Bright Funds  
Caring For Colorado  
Christine and David Ross Charitable Fund  
Cielo Foundation  
Dodge Family Fund  
ECCBC Fund  
Fidelity Charitable Donor Advised- Fund  
Healthy Childcare Colorado  
Kingsberry Friends and Family Fund  
Longmont Community Foundation  
Norris Family Foundation  
Ray Lanyon Fund  
Schnabel Family Fund  
Silicon Valley Community Foundation  
Temple Honey Buell Foundation  
Thomas & Betty Lou Brock Fund



# STATEMENT OF FINANCIAL POSITION

## STATEMENT OF FINANCIAL POSITION

August 31, 2021 and 2020

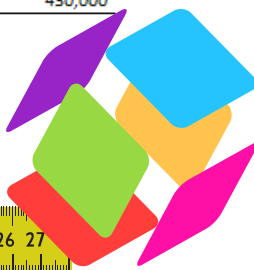
	ASSETS	2021	2020
<b>CURRENT ASSETS</b>			
Cash		1,260,842	968,382
Grants receivable		174,868	112,277
Prepaid insurance and refunds		25,628	21,978
Lease deposit		2,800	2,800
Total current assets		<u>1,464,138</u>	<u>1,105,437</u>
<b>PROPERTY AND EQUIPMENT</b>			
Buildings		1,441,365	1,449,442
Furniture and equipment		321,149	276,727
Computer equipment		105,092	115,543
		<u>1,867,606</u>	<u>1,841,712</u>
Less accumulated depreciation		<u>(855,128)</u>	<u>(824,247)</u>
Net property and equipment		<u>1,012,478</u>	<u>1,017,465</u>
<b>TOTAL ASSETS</b>		<u>\$ 2,476,616</u>	<u>\$ 2,122,902</u>

## LIABILITIES AND NET ASSETS

<b>CURRENT LIABILITIES</b>			
Accounts payable		23,224	53,415
Deferred revenue		93,733	75,000
Payroll liabilities		83,311	49,157
Accrued vacation		102,902	97,642
Current portion of long-term debt		9,060	8,631
Total current liabilities		<u>312,230</u>	<u>283,845</u>
<b>LONG-TERM LIABILITIES</b>			
Mortgage payable less current portion		166,502	175,518
Total long-term liabilities		<u>166,502</u>	<u>175,518</u>
Total liabilities		<u>478,732</u>	<u>459,363</u>

## COMMITMENTS AND CONTINGENCIES (Notes 3 and 5)

<b>NET ASSETS</b>			
Without donor restrictions		1,567,884	1,233,539
With donor restrictions (Note 8)			
Worthy Cause Awards		430,000	430,000
Total net assets with donor restrictions		<u>430,000</u>	<u>430,000</u>





# STATEMENT OF ACTIVITIES

## STATEMENTS OF ACTIVITIES

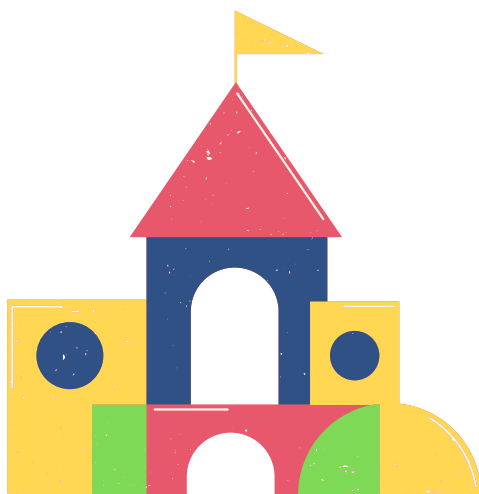
	Years Ended August 31,	
	2021	2020
<b>CHANGES IN NET ASSETS</b>		
<b>WITHOUT DONOR RESTRICTIONS</b>		
Head Start grant proceeds received	\$ 1,511,234	\$ 1,503,209
Early Head Start grant proceeds received	1,075,644	1,030,607
One Time Federal Awards	251,050	-
Use of contributed facilities	319,109	321,791
In-Kind Full Day	240,326	372,767
Non-Head Start income	1,046,588	1,000,820
USDA reimbursements	108,899	113,683
Colorado preschool income	384,929	234,900
Contributed professional services and materials	76,854	89,206
Total revenues and support	\$ 5,014,633	\$ 4,666,983
<b>EXPENSES AND LOSSES</b>		
Head Start program	\$ 1,909,313	\$ 2,102,993
Early Head Start program	\$ 1,108,799	1,031,324
Non-Head Start program	\$ 610,280	484,506
Head Start general and administrative expenses	\$ 311,743	245,750
Early Head Start general and administrative expenses	\$ 153,689	122,387
USDA School Lunch program	\$ 108,898	113,683
Head Start training and technical program	\$ 25,195	24,044
Early Head Start training and technical program	\$ 26,261	24,362
Non-Head Start general and administrative expenses	\$ 7,874	112,886
One Time Federal Awards	\$ 222,163	-
Total expenses	\$ 4,484,215	\$ 4,261,935
Depreciation expense	58,362	62,159
Loss on disposition of fixed assets	1,102	-
Total expenses and losses	\$ 4,543,679	\$ 4,324,094
Total changes in net assets without donor restrictions	470,954	156,280
Total changes in net assets with donor restrictions		50,000
<b>CHANGE IN NET ASSETS</b>	\$ 470,954	\$ 206,280



# BUDGET INFORMATION

## SCHEDULE OF FEDERAL BUDGET VS. ACTUAL REVENUES AND EXPENSES Year Ended August 31, 2021

	Approved Budget	Actual	Variance Favorable (Unfavorable)
<b>REVENUE:</b>			
OHHS funds-			
Amount awarded	\$ 2,837,928	\$ 2,837,928	\$ -
Grantee's non-federal share-			
In-kind contributions	646,724	646,724	
Reimbursement-			
USDA (School Lunch Program)	108,898	108,898	
<b>Total Revenue</b>	<b>\$ 3,593,550</b>	<b>\$ 3,593,550</b>	
<b>EXPENSES:</b>			
OHHS share-			
Head Start program & Early Head Start program			
Direct Costs:			
Personnel	\$ 2,407,321.00	\$ 2,026,370.00	\$ 2,504,658
Fringe benefits	142,603	96,306	46,297
Supplies	88,700	33,659	55,040
Contractual	63,960	68,748	(4,788)
Other direct costs	848,770	366,048	482,722
Less non-federal expenditures contributed to Head Start program		(263,617)	263,617
	3,551,354	2,805,802	745,554
Training and technical assistance			
Other direct costs	42,196	51,456	(9,260)
	42,196	51,456	(9,260)
<b>Total OHHS share</b>	<b>\$ 3,593,550</b>	<b>\$ 2,857,258</b>	<b>\$ 736,294</b>
Grantee's non-federal share-			
Head Start program			
In-kind contributions-			
Facilities, professional services, supplies		\$ 636,289	
Volunteer services		10,435	
<b>Total in-kind contributions</b>		<b>646,724</b>	
<b>Total grantee's non-federal share</b>		<b>646,724</b>	
Reimbursable expense-			
USDA reimbursement for meals		108,898	
<b>Total reimbursable expense</b>		<b>108,898</b>	
<b>Total expenses</b>		<b>3,612,880</b>	
<b>Excess of revenue over expenses</b>		<b>\$ (19,330)</b>	



# 2021-2022

## PROPOSED BUDGET

REVENUES	
Grant revenue	3,026,384
Colorado Preschool Program	259,200
In-kind Income	654,481
USDA Income	161,141
Other Income	516,335
<b>Total Income</b>	<b>\$ 4,617,541</b>

EXPENSES	
Personnel	2,852,133
Fringe benefits	491,209
Supplies	159,807
Contractual	148,033
Other direct costs	923,664
Training and Technical Assistance	42,696
<b>Total Expense</b>	<b>4,617,541</b>



# BOARD OF DIRECTORS

The Board of Directors of Wild Plum Center is an active, engaged group of people that meets with key staff annually for an in-depth strategic planning session and monthly to set policies and maintain the overall direction of Wild Plum Center. The board defines the mission, establishes priorities, crafts strategies, and ensures that plans and programs are implemented.

**PRESIDENT:** Kenda Vaughan, Therapist, Private Practice

**VICE PRESIDENT:** Don Horton, Retired, Boulder County Public Health

**CONSULTANT TREASURER:** Stephen Hoel, Principal, SVVSD

**SECRETARY:** Amy Hunter, Nurse, Life Care Longmont

**MEMBERS:** Holly Kammerer, Attorney, Burg Simpson

Judy Davis, School Counselor/Administrator

Eileen Smith, Community Advocate

Erika Salas, Community Advocate

Rodrigo Leon, Engineer

Sandra Parra, Parent Representative

Olga Bermudez, Early Childhood Prevention Coordinator



# SHOW YOUR SUPPORT

## INVEST IN EARLY CHILDHOOD EDUCATION

Please consider contributing to the Wild Plum Center with a monetary donation. Without these gifts of financial support we would not be able to provide essential services to Longmont's low income families and their children. If you want to contribute to equity through education, visit [www.wildplumcenter.org/donate](http://www.wildplumcenter.org/donate)



## BECOME A COMMUNITY ADVOCATE

There are countless ways to support the hundreds of families we are honored to serve. Whether you are looking for a home for your gently used toys, clothes and books or you are looking for a group volunteer project, we would love to work together!

To find out more about becoming a donor, volunteer or community advocate contact us today!

Keri Davis, Community Partnership Director

[kerid@wildplumcenter.org](mailto:kerid@wildplumcenter.org)

Call: 303-776-8523

Mailing address: 82 21st Avenue, Longmont, CO 80501

[www.wildplumcenter.org](http://www.wildplumcenter.org)







303-776-8523  
[www.wildplumcenter.org](http://www.wildplumcenter.org)

At Wild Plum Center we are supporting low-income families in Longmont through individualized early childhood education and services that ensure children enter school prepared to learn and families are equipped to be successful.

Our early childhood education programs are provided at no cost to qualifying families.