

**NOURISHING
MINDS
GROWING
FUTURES**

ANNUAL REPORT 2015

Wild Plum Center is Longmont's leader in early childhood education and developmental services, empowering families and readying children ages zero to 5 years for the future.

Infant Care • Toddler Care •
Preschool

CONTENTS

	Page
Message from the Executive Director	3
Services	4 - 5
School Readiness Plan,	
Head Start Outcomes	6
Early Head Start Outcomes	7
Family Outcomes	8
Transition Plan	9
Demographics	10
Federal Reports	11
Parent Involvement	12
Community Partnerships	13
Financials	14 - 15
2014-2015 Budget Information	16
2015-2016 Proposed Budget	17
Board of Directors	18
Thanks to Our Supporters	19
Make a Difference	20



Native to Colorado, the wild plum tree represents growth, nourishment, and stability—core elements WPC offers to the families we serve .

MESSAGE

From the Executive Director

The annual report is my opportunity to reflect on and quantify the hard, but satisfying, work accomplished by the Wild Plum Center throughout a school year. It's exciting to see our progress and the fresh successes of our children and families. The 2014-2015 school year was a dynamic and productive one, vibrant with planning and progressive change.

Teachers and parents

A highlight was celebrating significant improvements in instructional methods related to teaching beginning math skills and rhyming. Professional development for teachers in these two instructional areas netted great returns.

Our work with parents focused on instilling four practices in each family's daily functioning:

- Reading daily to children
- Talking with children using vocabulary-rich language
- Creating predictable routines
- Using positive discipline strategies

Each family in the program enacted at least one of these practices at home.

Community

In the community, Wild Plum Center developed vital alliances with other home-visiting programs in Boulder County and began work with the Raising of America Partnership. Our efforts in the Home Visit Collaboration will result in brighter light shined on the success of child and family outcomes realized through home-visiting programs. A goal of the Raising of America Partnership is to influence both businesses and policy makers in supporting the importance of family voice in their work.

Five-year goals

Continuing Wild Plum Center's constant drive to improve outcomes for our young children and families, the schoolyear ended on a high note with the development of five-year program goals. Focus areas are health, education, and family services, which we believe will continue to raise Wild Plum Center's profile as the expert in the field of early childhood development and parent engagement in the Longmont community. Wild Plum Center families will realize more success in achieving self-sufficiency as they work with our dedicated staff, accessing resources in the community aimed at giving each family a hand up.

Please read through our annual report to learn more about how the Wild Plum Center staff and families work together to help create bright, fruitful futures for generations of young children.

Amy Ogilvie



WPC joins the Raising of America Partnership

SERVICES

Early Head Start—0 to 3 years

Wild Plum Center provides Early Head Start developmental services to low-income zero- to 3-year-old children, including prenatal and post-partum support for pregnant women. Parents may select from either a home-based or center-based service model. Home-based services involve family educators working with parents one-on-one in a home setting for 1.5 hours each week. This program option is supplemented by group-delivered parent education and parent/child socialization activities with family educators.

Center-based services provide a curriculum-based setting for children while parents pursue employment or educational activities. Service elements are intended to address any and all aspects of need within a child's life, allowing for significant developmental experiences. All services are offered in both English and Spanish and are provided at 100% scholarship to parents and guardians.

Preschool Programs—3 to 5 years

Wild Plum Center currently provides two comprehensive preschool programs to low-income 3 to 5 year olds: Head Start and (non-Head Start funded) Head Start-modeled preschool. Preschool service elements mirror those of Early Head Start, addressing all aspects of need and allowing for meaningful and impactful educational experiences.

Creative Curriculum

Wild Plum Center uses the research-based Creative Curriculum in all 14 of its classrooms, including three Early Head Start classrooms. Creative Curriculum focuses on all areas of children's growth:

- Physical
- Cognitive
- Social/emotional
- Literacy
- Language development



Creative Curriculum allows each teacher to incorporate and address the specific interests, characteristics, and needs of the children and families in their individual classrooms.

Teachers integrate a theme for the week or month and immerse students in that topic through classroom materials, books, and activities—all sparked by student interest.

Family Engagement

Wild Plum Center regards parents as the first, the best, and most important teachers of their children. Similarly, we believe the family unit, in whatever form it may take, is the foundation for a child's early development and learning. Wild Plum Center places

parental involvement, the parent/child relationship, as well as the mental health of both caregivers and children as the highest priorities. Strong, healthy families lead to successful, self-sufficient families and children. Wild Plum Center offers numerous opportunities to foster the health and well-being of Wild Plum Center children and families, including:

- Mental health services
- Family support and case management
- Parent education and socialization activities

Transportation

Wild Plum Center provides transportation to and from school for families that need help with transportation. This year, we provided bus service to 66 families. We also assist Wild Plum Center families by transporting children to after-school care centers to help parents who have jobs outside of the home.

Transportation is also provided when parents need assistance getting children who are in the program to medical appointments.

Nutrition and Health

In order for children to be ready to learn, they need proper nutrition. Wild Plum Center provides two-thirds of a child's nutritional requirements each day they are in school. Using USDA guidelines for healthy nutrition ("My Plate"), Wild Plum Center offers breakfast, lunch, and a snack depending on full- or part-day schedules. To reinforce healthy eating

at home, nutrition classes are offered at no cost to Wild Plum Center families.

Wild Plum Center works with parents and caregivers to access healthcare screenings and services for their children. Our health services include:

- Hearing and vision screenings
- Well-child support, including care and vaccines
- Prenatal, postpartum, and breastfeeding support and education
- Nutrition information for the entire family, such as helping families access supplemental food items

We also provide referrals to health providers and other community resources as appropriate and help families understand and navigate complicated medical situations in order for them to get proper treatment.



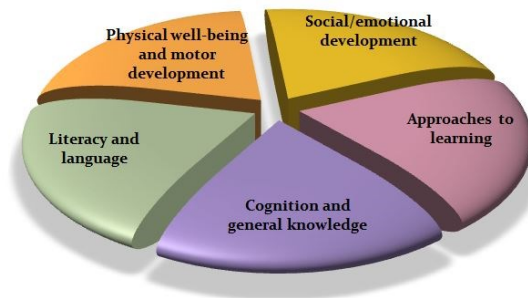
Also, Wild Plum Center offers First Aid and CPR classes at no cost to our program parents.

SCHOOL READINESS PLAN

Wild Plum Center has a School Readiness Plan that includes the following foundation:

- Children and families that are school ready when entering kindergarten will have a higher level of future academic success
- School readiness is determined based on a child's achievement level in five domains
- Comprehensive, organizational goals and objectives are required in each of the five domains
- Analysis of school readiness data collected by the program serves as a basis for the professional development of staff in the program
- Analysis of school readiness data helps us individualize plans for children and families that promote parents as life-long educators
- Parent engagement is a critical element of school readiness success

School Readiness Domains



Wild Plum Center works closely with each child and his/her family members throughout the year.

Teachers send individualized activities home for the child to work on with a parent's support. A few examples are books to read, writing one's name, or a counting activity.

HEAD START OUTCOMES

Wild Plum Center uses the Teaching Strategies Gold observational assessment system for all children. In the fall, winter, and spring teachers compare each child's skills and behaviors to research-based indicators of learning and development. These comparisons indicate for each domain, whether a child's skills and behaviors are below, at, or above expectations for their age.

The graph at the top of the next page shows the percentage of children

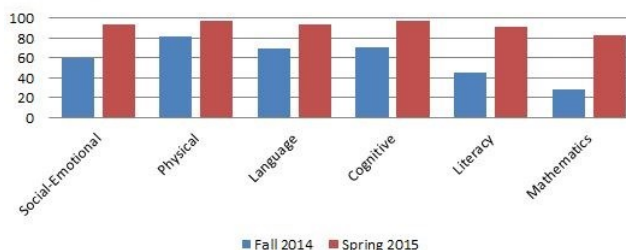
meeting or exceeding expectations in areas of targeted skills, including particular emphasis on mathematics, when they started at the Wild Plum Center in the fall of 2014, and where they were in the spring of 2015.

Areas of note are Social-Emotional—which realized an increase of 35% from fall 2014 to spring 2015—and Math—which showed a robust 56% increase during the same time period. The increase in Mathematics can be attributed to the intentional focus on

this academic area by teachers during this year, utilizing specific strategies from the Kids Play Math program.

Overall, the graph shows significant increases in growth from the beginning of the school year to the end, proving the effectiveness of Wild Plum Center's positive impact on children's development and kindergarten readiness.

Percentage of Children Meeting & Exceeding Expectations
English/Spanish Speaking
ages 3 to 5 yrs



EARLY HEAD START OUTCOMES

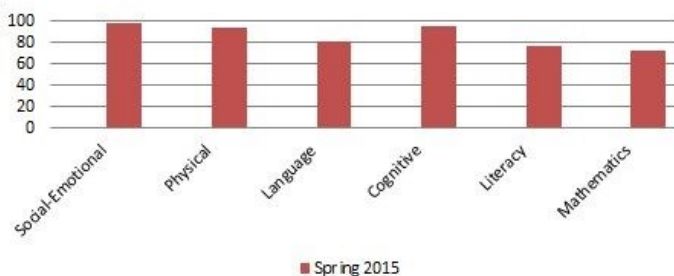
Wild Plum Center Early Head Start program outcomes look much different than the Head Start classroom outcomes not only because of the wide variety of skills developed and developmental growth that takes place between the 0-3 age, but also due to individual developmental differences within the first year of life. For example, in the mathematics domain a 0-1 year old will not exhibit emerging skills until they are approaching the first birthday, therefore mathematics is

not included for the 0-1 year old program outcomes.

Due to the Early Head Start program being very fluid, the data collected in the fall will possibly be very different, as children move out of the program throughout the year due to turning 3 years old, or families moving and new children starting, which can be late in the spring. All these factors make the developmental growth in each domain vary quite a bit. The graphs shown

below reflect where the 0-3 year olds were in the spring of 2015.

Percentage of Children Meeting & Exceeding Expectations
English/Spanish Speaking
ages 0 to 3 yrs



FAMILY OUTCOMES

In addition to monitoring children's progress, Wild Plum Center assesses families' progress toward increased self-sufficiency.

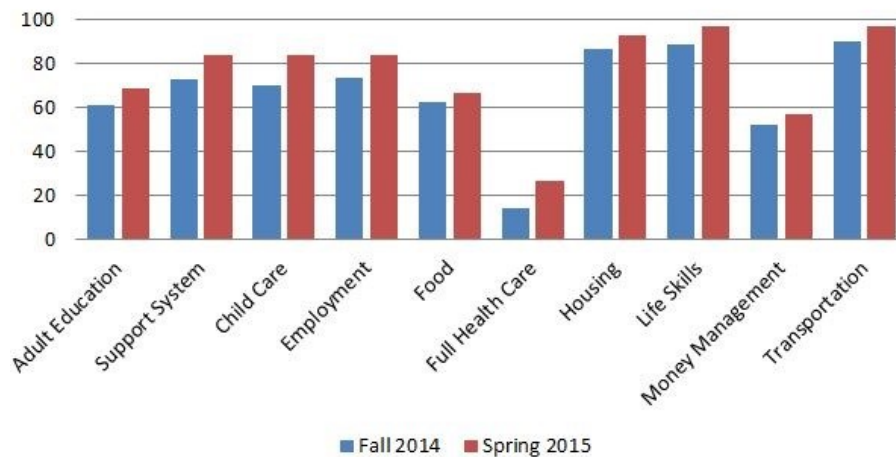
Areas of measure include:

- Food and nutrition
- Housing
- Employment
- Adult education
- Parenting education (ie: Love and Logic® classes)
- Mental health
- Domestic violence
- Child abuse
- Need for emergency services

Every Wild Plum Center family participates in a Self-Sufficiency Analysis, as well as a review of progress made toward goals as outlined in an individualized Family Partnership Agreement. The graph below shows outcomes from the analysis, which shows significant increases in several areas of self-sufficiency for program families during the 2014-2015 school year.

Self-Sufficiency Outcomes

2014-2015 school year



TRANSITION PLAN

Wild Plum Center approaches all transitions as an opportunity for growth, as they lay the foundation on which to develop the skills that are necessary for weathering change throughout life. Transitions from Early Head Start to Head Start and Head Start to kindergarten are crucial times for decision-making about children's services. The transition process should ensure service continuity, reduce family disruptions, prepare children for their program placements, and meet legal requirements (IDEA and ADA).

Transition plan for Early Head Start

For children transitioning from the home-based and center-based programs, there are several conversations that take place between Wild Plum Center staff and parents beginning six months in advance of the actual transition. It's determined if the family will re-qualify for Head Start programming. Staff begin to prepare the children for school by utilizing a "transition kit" (photos of the classroom, playground, teachers, etc.) to help familiarize the child to the preschool classroom. Early Head Start and preschool staff, together with parents, meet in the classroom for an orientation and exchange of necessary paperwork.

Our Transition Plan was designed to help children who are transitioning from one setting to the next. In order to make these

transitions as seamless as possible, Wild Plum Center staff maintains close and consistent contact with the child and family through every step of the process.

Transition plan for 4 and 5 year olds going to kindergarten

Throughout the school year, we have on-going discussions about kindergarten with children and their parents. We encourage parents to continue to advocate for their children's education. Wild Plum Center staff talk with families about the registration process and give parents support with enrollment, filling out scholarship requests, and with translation. Transition meetings with the school district are scheduled as needed. Wild Plum Center staff supports the families in every step of this transition process. We encourage the family to visit the new school, classroom, and playground.



DEMOGRAPHICS

EARLY HEAD START

Enrollment year
August 1, 2014–July 31, 2015

Early Head Start funded enrollment: 76
Center-based, 5 days a week: 24
Home-based: 44
Pregnant women: 8

Total cumulative enrollment: 119 children from 79 families

Number of children:
Under one year old: 38
1 year old: 26
2 years old: 29
3 years old: 10
Pregnant women: 16

HEAD START

Enrollment year
September 2, 2014–May 21, 2015

Head Start funded enrollment: 155
Funded enrollment from non-federal sources: 32

Total cumulative enrollment: 205 children from 187 families

Number of children:
3 years old: 7
4 years old: 80
5 years old: 118



Children living at or below 100% of the federal poverty line: 93

Receipt of public assistance such as TANF or SSI at time of enrollment: 9

Children that experienced homelessness during this enrollment year: 10

Children with continuous, accessible health care: 103

Children with continuous, accessible dental care provided by a dentist: 95



Children living at or below 100% of the federal poverty line: 135

Receipt of public assistance such as TANF or SSI at time of enrollment: 29

Children that experienced homelessness during this enrollment year: 30

Children that have an ongoing source of continuous, accessible health care: 205

Children have continuous, accessible dental care at the end of this enrollment year: 204

FEDERAL REPORTS

Total amount of public and private funds received and amount from each source:

Foundations
\$19,222.50
City of Longmont
\$54,999.99
Boulder County
\$56,732.00
St. Vrain Valley School District
\$118,800.00
Individuals
\$19,183.93
Churches
\$192,008.29

Percentage of eligible children served:

Early Head Start

- 78% below income
- 8% receiving public assistance
- 8% homeless
- 6% over-income

Head Start

- 67% below income
- 14% receiving public assistance
- 15% homeless
- 3% over-income
- 1% foster care

Percentage of enrolled children receiving medical and dental exams:

Early Head Start

Medical exams at enrollment: 41%

Medical exams at end of enrollment: 74%

Dental exams: 80%

Head Start

Medical exams at enrollment: 29%

Medical exams at end of enrollment: 84%

Dental exams: 95%

Average monthly enrollment for both Early Head Start and Head Start: 100%.

OFFICE OF HEAD START EVALUATION

Wild Plum Center was reviewed by the Office of Head Start in 2014 on its compliance with over 2,000 performance standards and regulations. There were zero non-compliance issues.

Results of most recent audit: In 2014, zero concerns were identified.

PARENT INVOLVEMENT

Wild Plum Center makes every effort to support parents on their journeys in parenthood and on their own paths to self-sufficiency and lifelong learning. We offer many opportunities to all parents and caregivers of children who are enrolled in our programs. These include:

- Participation in Parent Policy Council. This is one of Wild Plum Center's two governing bodies.
- Participation on the Health Advisory Committee. This is a group of medical and healthcare professionals and parents who work to ensure that all Wild Plum Center children receive the health care they need.
- Monthly Parent/Child activities. These "socializations" are held twice a month and include parent educational activities and workshops, gatherings in the local parks, dance performances, visits to museums and children's fun centers, recreation centers and other community events.
- Love and Logic® classes. This program specializes in empowering parents to help their children make healthy choices, in order to create a calm, living home environment in which all family members can thrive.
- Infant/Child and Adult CPR and First Aid classes.
- Nutrition classes. Called "Cooking Matters" this course teaches parents about USDA guidelines for healthy nutrition ("My Plate"), how to shop efficiently and ways to cook balanced, healthy meals.
- Kindergarten transition support.
- In-home learning opportunities.
- Male Involvement Group. These are monthly gatherings for children and their fathers, or other significant male family members.

Our Male Involvement Group is important for bonding and connection.



COMMUNITY PARTNERSHIPS

Wild Plum Center has a long history effective collaborative relationships with a variety of local non-profits and Boulder County organizations. These include:

Atria Senior Living Center	Longmont Chamber of Commerce
Boulder County	Meeker Neighborhood Center
Boulder County Justice Center	Safe Shelter of St. Vrain Valley
BrightEYES	St. Vrain Valley School District
City of Longmont	St. Vrain Valley Early Education Council
City of Longmont Housing and Human Services Board	OUR Center
Community Food Share	TLC Learning Center
Early Childhood Council of Boulder County (ECCBC)	COFI (Community Organizing and Family Issues)
First Lutheran Church of Longmont	Live Well Longmont
First United Methodist Church of Longmont	Longmont Public Library
Home Visit Collaboration	Kiwanis Club of Longmont
Longmont Senior Center	Knit and Pearl Senior Knitters
Health Services Advisory Committee	Community Justice Services
Boulder County Public Health	Denver Museum of Nature and Science
Latino Chamber of Commerce	YMCA
Colorado State University	
Foothills United Way	
SCORE	
Breast Feeding Coalition	
Denver Zoo	
HEAL (Healthy Eating and Active Living) Coalition	
Raising of America Partnership	
GOCO Inspire Initiative Coalition	
Inn Between	

FINANCIALS

STATEMENT OF FINANCIAL POSITION			
	August 31,		
ASSETS	2015		2014
CURRENT ASSETS			
Cash	\$ 231,712		\$ 114,464
Grants receivable	50,182		106,541
Accounts receivable	-		637
Prepaid insurance and refunds	6,721		11,239
Lease deposit	2,800		2,800
Total current assets	291,415		235,681
PROPERTY AND EQUIPMENT			
Building	850,590		850,590
Furniture and equipment	445,553		489,155
Computer equipment	155,482		153,474
	1,451,625		1,493,219
Less accumulated depreciation	(752,581)		(729,251)
Net property and equipment	699,044		763,251
TOTAL ASSETS	\$ 990,459		\$ 998,932
LIABILITIES AND NET ASSETS			
CURRENT LIABILITIES			
Accounts payable	\$ 32,005		\$ 58,939
Payroll liabilities	69,485		64,998
Accrued vacation	58,761		-
Current portion of long-term debt	8,068		7,772
Total current liabilities	168,319		131,709
LONG-TERM LIABILITIES			
Mortgage payable less current portion	34,654		42,722
Total long-term liabilities	34,654		42,722
TOTAL LIABILITIES	202,973		174,431
COMMITMENT AND CONTINGENCY			
NET ASSETS			
Unrestricted net assets	657,486		694,501
Temporarily restricted net assets	130,000		130,000
Total net assets	787,486		824,501
TOTAL LIABILITIES AND NET ASSETS	\$ 990,459		\$ 998,932

FINANCIALS

STATEMENTS OF ACTIVITIES		
	Years Ended August 31,	
	2015	2014
UNRESTRICTED REVENUES AND SUPPORT		
Head Start grant proceeds received	\$ 1,225,814	\$ 1,092,074
Early Head Start grant proceeds received	961,555	956,165
Use of contributed facilities	318,870	243,867
Non-Head Start income	172,648	210,068
USDA reimbursements	126,547	110,242
Colorado preschool income	121,300	78,100
Contributed professional services and materials	108,833	38,420
In-kind capital asset	3600	-
Total revenues and support	<u>\$ 3,039,167</u>	<u>\$ 2,728,936</u>
EXPENSES AND LOSSES		
Head Start part year/part day program	\$ 1,286,732	\$ 1,068,575
Early Head start full year services program	969,702	937,261
Non-Head Start program	201,641	202,428
Head Start general and administrative expenses	135,195	119,617
Early Head Start general and administrative expenses	129,054	113,786
USDA School Lunch program	117,580	108,055
Head Start training and technical program	23,389	26,337
Early Head Start training and technical program	26,818	23,663
Non-Head Start general and administrative expenses	52,293	33,899
Total expenses	<u>\$ 2,942,404</u>	<u>\$ 2,633,621</u>
Depreciation expense	<u>75,017</u>	<u>78,110</u>
Total expenses and losses	<u>\$ 3,017,421</u>	<u>\$ 2,711,731</u>
CHANGE IN NET ASSETS	<u>\$ 21,746</u>	<u>\$ 17,205</u>

2014-2015 BUDGET INFORMATION

SCHEDULE OF FEDERAL BUDGET			
VS. ACTUAL REVENUES AND EXPENSES			

	Approved Budget	Actual	Variance Favorable (Unfavorable)
REVENUES:			
CURRENT ASSETS	\$2,048,239	\$2,187,369	\$139,130.00
OHHS funds-			
Amount awarded			
Grantee's non-federal share-			
In-kind contributions		550,313	
Worthy Cause donation		12,950	
Reimbursement-			
USDA (School Lunch Program)		126,547	
Total Revenues	<u>2,048,239</u>	<u>2,877,179</u>	
EXPENSES:			
OHHS share-			
Head Start Part Year/Part Day			
Early Head Start/Full Year Services			
Direct Costs:			
Personnel	1,766,295	1,733,330	32,965
Fringe benefits	133,401	103,369	30,032
Supplies	43,200	45,103	(1,903)
Contractual	40,015	42,196	(2,181)
Other direct costs	<u>162,262</u>	<u>213,165</u>	<u>(50,903)</u>
	2,145,173	2,137,163	8,010
Training and technical assistance			
Other direct costs	<u>42,197</u>	<u>50,207</u>	<u>(8,010)</u>
	<u>42,197</u>	<u>50,207</u>	<u>(8,010)</u>
Total OHHS share	<u>\$2,187,370</u>	<u>\$2,187,370</u>	<u>\$ -</u>
EXPENSES (continued):			
Grantee's non-federal share-			
Head Start Part Year/Part Day			
In-kind contributions-			
Facilities, professional services, supplies		\$427,703	
Capital assets		\$3,600	
Volunteer services		<u>119,010</u>	
Total in-kind contributions		<u>550,313</u>	
Worthy Cause Donation		<u>12,950</u>	
Total grantee's non-federal share		<u>563,263</u>	
Reimbursable expense-		<u>117,599</u>	
USDA reimbursement for meals		<u>117,599</u>	
Total reimbursable expense			
Total expenses		<u>2,868,232</u>	
Excess of revenue over expenses		<u>\$8,947</u>	

2015-2016 PROPOSED BUDGET

REVENUES

Grant revenue	\$2,326,583.27
Colorado Preschool Program	\$118,800.00
In-kind Income	\$546,843.00
USDA Income	\$112,921.24
Total Income	\$3,105,147.51

EXPENSES

Personnel	\$1,798,353.32
Fringe benefits	\$382,272.85
Supplies	\$114,045.03
Contractual	\$54,025.36
Other direct costs	\$714,254.95
Training and Technical Assistance	\$42,196.00
Total Expense	\$3,105,147.51



BOARD OF DIRECTORS

2014-2015

President	Bobbie Watson, Executive Director, Early Childhood Council of Boulder County
Vice President	Holly Kammerer, Attorney, Burg Simpson
Treasurer	Karissa Becklund, VP Guaranty Bank
Secretary	Kenda Vaughan, Therapist, Private Practice
Member	Don Horton, Retired, Boulder County Public Health
Member	Janis Hughes, Principal, Burlington Elementary
Member	Hannah Hennig, Retired, Educator
Member	Luz Aceves, Parent; President, Policy Council



THANK YOU

Thanks to the following groups, businesses, and top individual donors who financially supported our program in 2014-2015

Primrose School
Menchies of Longmont
Lucky's Market
Chick-Fil-a
Primrose School of Longmont
Dizzy's Family Fun Center
Guaranty Bank and Trust
Lucky's Market—Longmont
Starbuck's
Xilinx
Salud Family Health Center
EcoCycle
Home Depot
Urban Oasis
Bailes De Me Tierra
Longmont Yarn Shoppe
Butterfly Pavilion
Liberty Puzzle

Top-10 Individual Donors

Paulo Briggs
Frank Cervantes
Deborah Cooper
Elizabeth Cuffel
James Williams

Dainty Photography
The Rib House
Mountain Flatwork
Botny Lane Greenhouse
BI Inc.
Colorado Materials
A Spice of Life
Hooked on Books
Safeway
Wild Tree Naturals
Book Nook
Lifetouch
Bagz By The Bag Lady
Otter Products
Santiago's of Longmont
Chipotle of Longmont
The Flower Bin

Jane Wilkinson
Sheldon and Kathleen Sands
Renee Valdez
Daniel Vena
Robert Goings

Additionally, many thanks to the hundreds of other individuals who donated cash, goods, and services. You are so important!

MAKE A DIFFERENCE TO A CHILD

Become a donor or community volunteer!

Make a donation

Please consider contributing to the Wild Plum Center with a monetary donation. Without these gifts of financial support we would not be able to provide essential services to low-income children and families living in Longmont.

Become a community volunteer

Community volunteers are an important part of the Wild Plum Center! Professionals, high school and college students, homemakers, retired senior citizens—all kinds of people offer their much needed help to our program. Volunteers assist with classroom activities; assist with educational, health, and administrative projects; become "classroom readers"; help with Wild Plum Center community events; and more!

Volunteering is essential to the Wild Plum Center program. The success of our program depends upon active participation of parents and others in the community. Your knowledge, time, and talent can all contribute to this effort.

There is no specific time commitment to volunteer. You can do it on your lunch break, as a one time event, or set a weekly schedule. We appreciate all volunteer hours!

To find out more about becoming a donor or volunteer, contact us today!

Keri Ruotsala, Community Partnership Director

kerir@wildplumcenter.org

Leah Herrera, leahh@wildplumcenter.org

Call: 303-776-8523

Fax: 303-485-9682

Mailing address:

82 21st Avenue

Longmont, CO 80501

www.wildplumcenter.org

