

WILD PLUM CENTER FOR YOUNG CHILDREN
AND FAMILIES

ANNUAL REPORT 2018-2019



Nourishing Minds. GROWING FUTURES.



CONTENTS

Message from the Executive Director.....3

Services.....4

Health and Nutrition.....5

Head Start Outcomes.....6

Early Head Start Outcomes.....7

Family Outcomes.....8

Transitions.....9

Demographics.....10

Federal Reports.....11

Parent Involvement.....12

Community Partnerships.....13

Financials.....14-15

Budget Information.....16

Board of Directors.....17



MESSAGE FROM THE EXECUTIVE DIRECTOR

I welcome the opportunity to look back on the 2018-2019 fiscal year and inform our community that Wild Plum Center continues to prosper and thrive. Our program is constantly being refined to meet the growing needs of our community while continuing to empower students and families for a lifetime of learning and self-sufficiency.

We know the importance of safe, yet exploratory learning environments in early childhood and continue to invest in infrastructure that encourages students' growth and development. At Powell, this meant installing new flooring and coating classrooms, offices, and the lobby with fresh paint. At Longs Peak we have continued development of the outdoor learning environment built in partnership with National Wildlife Federation's Early Childhood Health Outdoors Initiative. This year's progress includes the installation of bike paths, shade structures, raised garden beds, mud kitchens and music walls - all built alongside local business supporters and currently utilized by infant, toddler and pre-school classrooms. These classrooms now share learning opportunities in naturalized environments that promote physical activity, social interactions and healthy behaviors.

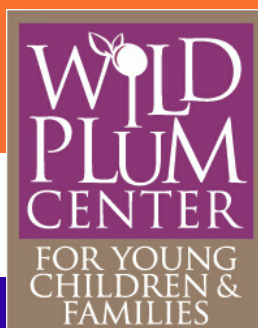
As we continue expanding and adapting to meet our growing population, we are happy to share that we added 16 infants and toddlers as well as 32 preschoolers to Longs Peak. We also have added Frog Street Curriculum in our Infant and Toddler classrooms, a bi-lingual curriculum designed around the latest scientific early brain development research.

While part of our program's focus is on students' development, we have also advanced Conscious Discipline training for the entire staff. Dr. Becky Bailey, the author of Conscious Discipline, delivers Professional Development options with heart. The life-changing powers, strategies and structures helps our team break through barriers and connect on a deeper level boosting buy-in and bringing about radical results. We have found the Conscious Discipline trainings empower teachers to teach vital social skills, increase academic achievement, and create a connected classroom.

As we look forward to the 2019-2020 school year, we are eager to build a brighter future together and are continually inspired by our board, staff, families and communities commitment to providing accessible education.



AMY OGILVIE



SERVICES

EARLY HEAD START- 0-3 years

Early Head Start developmental services are provided to 0-3 year old children from low-income families, including prenatal and post-partum support for pregnant women and children with disabilities. Parents/guardians may select from either a home-based or center-based service model, each provided at 100% scholarship. All services are offered in both English and Spanish.

- Home-based services involve Family Mentors working with parents one-on-one in a home setting for 1.5 hours each week. This option is supplemented by group-delivered parent education and parent/child socialization activities with family mentors.
- Center-based services provide a curriculum-based setting for children while parents work or go to school. Service elements are intended to address any and all aspects of need within a child's life, allowing for significant developmental experiences.

PRESCHOOL PROGRAMS- 3-5 years

A comprehensive Head Start preschool program is available to low-income 3-5 year olds including children with disabilities. Preschool service elements mirror those of Early Head Start, addressing all aspects of need and allowing for meaningful and impactful educational experiences.

CREATIVE CURRICULUM

Research-based Creative curriculum is used in all 20 Wild Plum classrooms, including Early Head Start. Creative Curriculum focuses on all areas of children's growth:

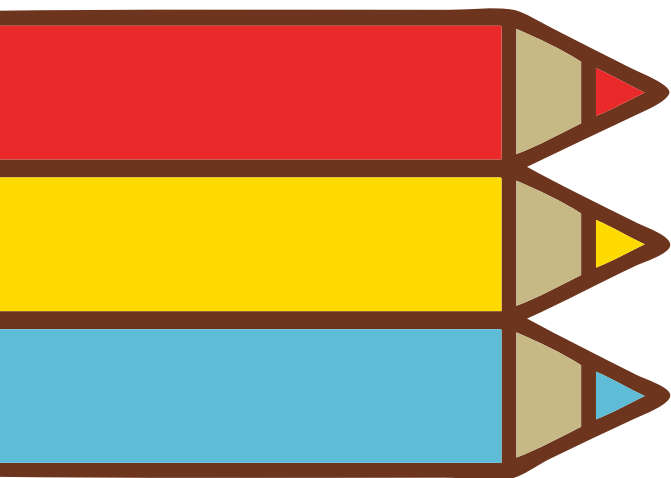
- Physical
- Cognitive
- Social/emotional
- Language and Literacy
- Approaches to Learning

Creative Curriculum allows each teacher to incorporate and address the specific interests, characteristics, and needs of the children and families in their class. Teachers integrate a study anywhere from a week to a month and immerse students in that topic through classroom materials, books, and activities- all sparked by student interests.

FAMILY ENGAGEMENT

Wild Plum Center regards parents as the first, the best, and most important teachers of their children. Wild Plum Center offers numerous opportunities to foster the health and well-being of program children and families, including:

- Mental health services
- Family support and case management
- Parent education and socialization





Wild Plum Center provides as much as **2/3** of a child's **NUTRITIONAL REQUIREMENTS** each day they are in school.

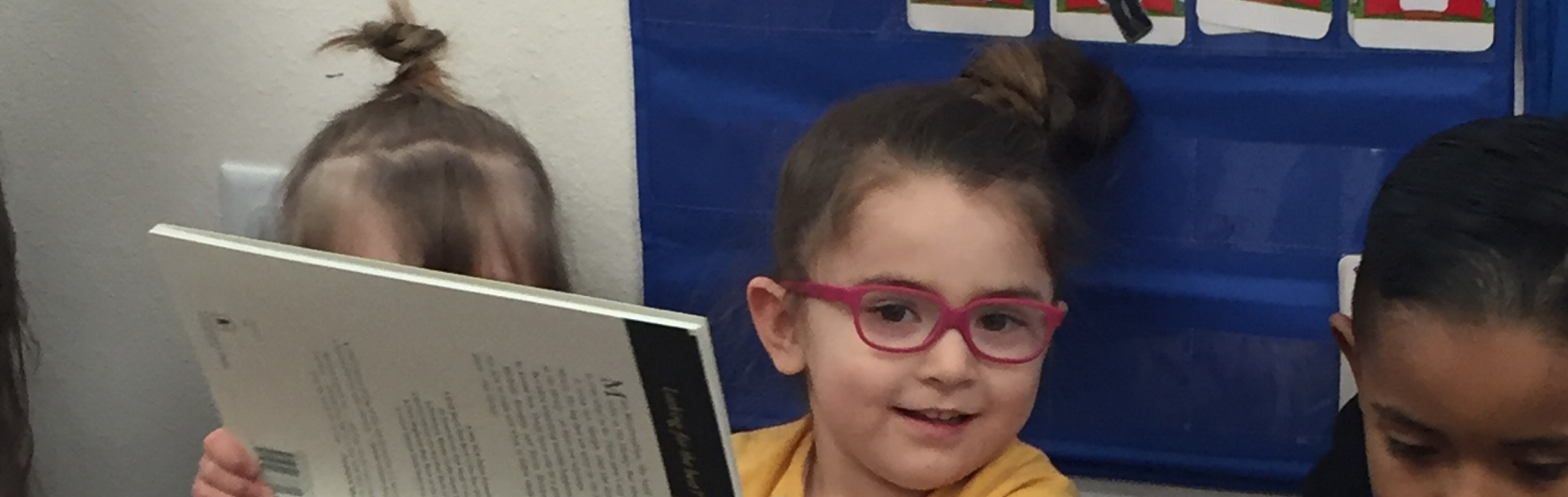
HEALTH AND NUTRITION

In order for children to be ready to learn, they need proper nutrition. Wild Plum Center provides as much as two-thirds of a child's nutritional requirements each day they are in school. Using USDA guidelines for healthy nutrition ("My Plate"), breakfast, lunch, and a snack are provided depending on full- or part-day schedules. To reinforce healthy eating at home, nutrition classes are offered at no cost to program families.

Wild Plum Center works with parents and caregivers to access healthcare screenings and services for their children. Our health services include:

- Hearing and vision screenings
- Well-child support, including care and vaccines
- Prenatal, postpartum, and breastfeeding support and education
- Nutrition information for the entire family, such as helping families access supplemental food items
- Prenatal and postpartum mental health screenings

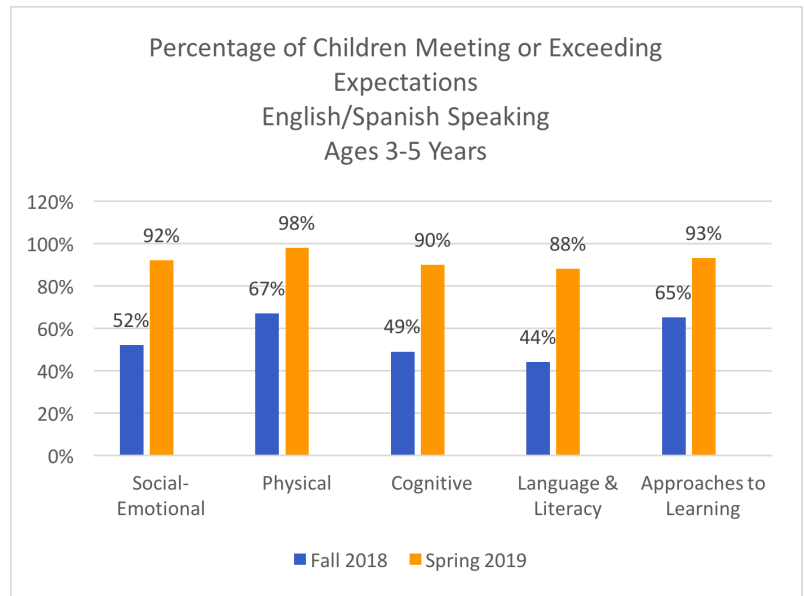
We also provide referrals to health providers and other community resources as appropriate and help families understand and navigate complicated medical situations to ensure they get proper treatment. Also, Wild Plum parents can participate in First Aid and CPR classes at no cost to them.



HEAD START OUTCOMES

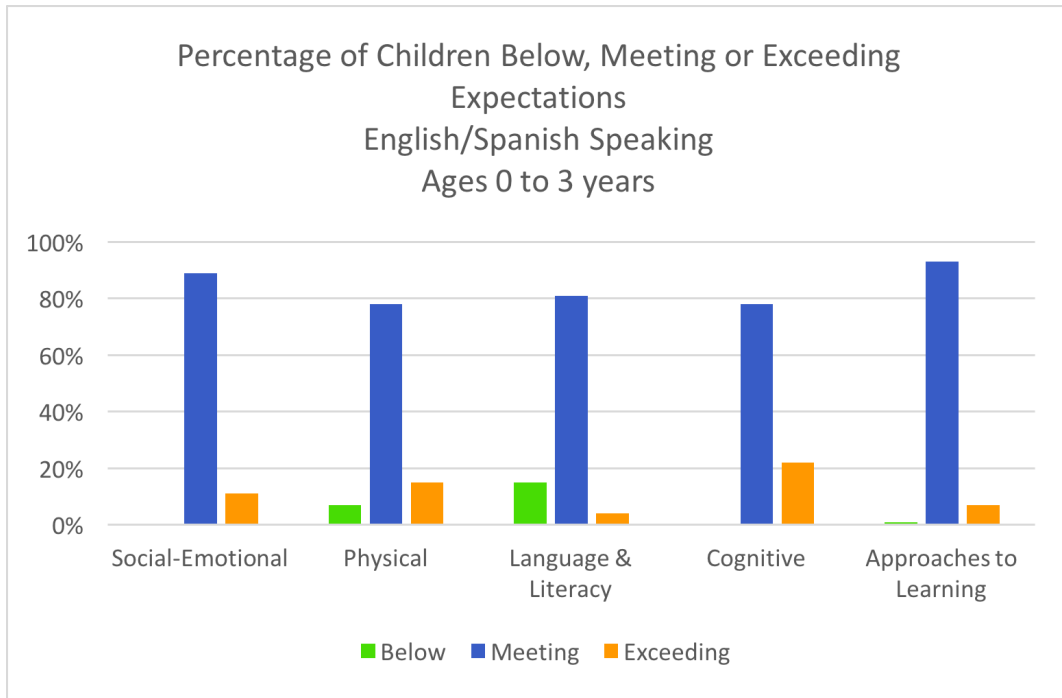
Wild Plum Center uses the Teaching Strategies Gold assessment system for all children. In the fall, winter, and spring the teachers compare each child's skills and behaviors to research-based indicators of learning and development. Early Head Start and Family Mentors complete a fourth assessment in the summer for the 0 to 3 year olds. These comparisons indicate for each domain, whether a child's skills and behaviors are below, at, or above expectations for their age.

The graph shows the percentage of children meeting or exceeding expectation in areas of targeted skills when they started at Wild Plum Center in the fall of 2018 and where they were in the spring of 2019. Children in all categories showed improvement across the school year and there was significant growth in children exceeding expectations overall. Numbers of children meeting and exceeding expectations were greater than 88% in all domains by spring; social/emotional, physical, literacy, approaches to learning and cognitive. The significant growth, almost 30% in all areas, proves the effectiveness of Wild Plum Center's positive impact on children's development and kindergarten readiness.

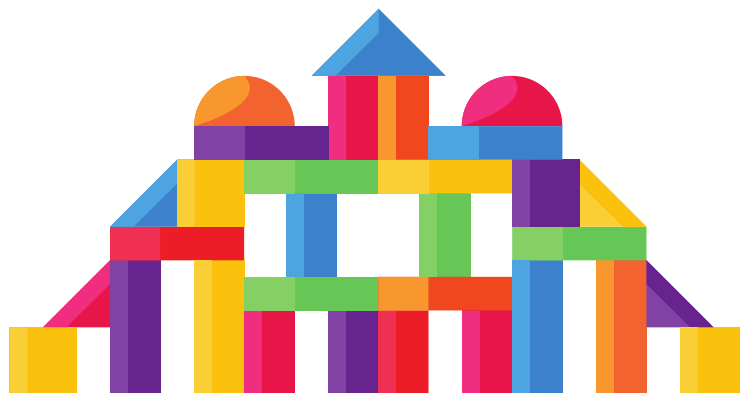


EARLY HEAD START OUTCOMES

Young children engage in learning in individually unique ways, which is why Wild Plum individualizes care and nurturing, intentionally teaching to a child's strengths and preferences. Through this approach, Early Head Start teachers and home visitors expose children to an array of learning opportunities designed to improve growth in each of the five developmental domains.



Wild Plum uses data to inform instruction allowing us to understand how our efforts are working and the developmental areas in which Wild Plum children may need more support. Data is gathered in the areas of social-emotional, physical, language, cognitive, and literacy with a subset of data related to approaches to learning being gathered in the cognitive development area. The pie charts above show the percentages of Wild Plum children meeting and exceeding expectations compared to children of the same age nationwide. At the final spring 2019 checkpoint, the Wild Plum Early Head Start children are shown to be on track developmentally.



FAMILY OUTCOMES

Wild Plum believes that strong family engagement leads to strong child outcomes.

In addition to monitoring children’s progress, Wild Plum Center assesses self-sufficiency, connections to peers and community, and parent/child relationships. Areas of measure include:

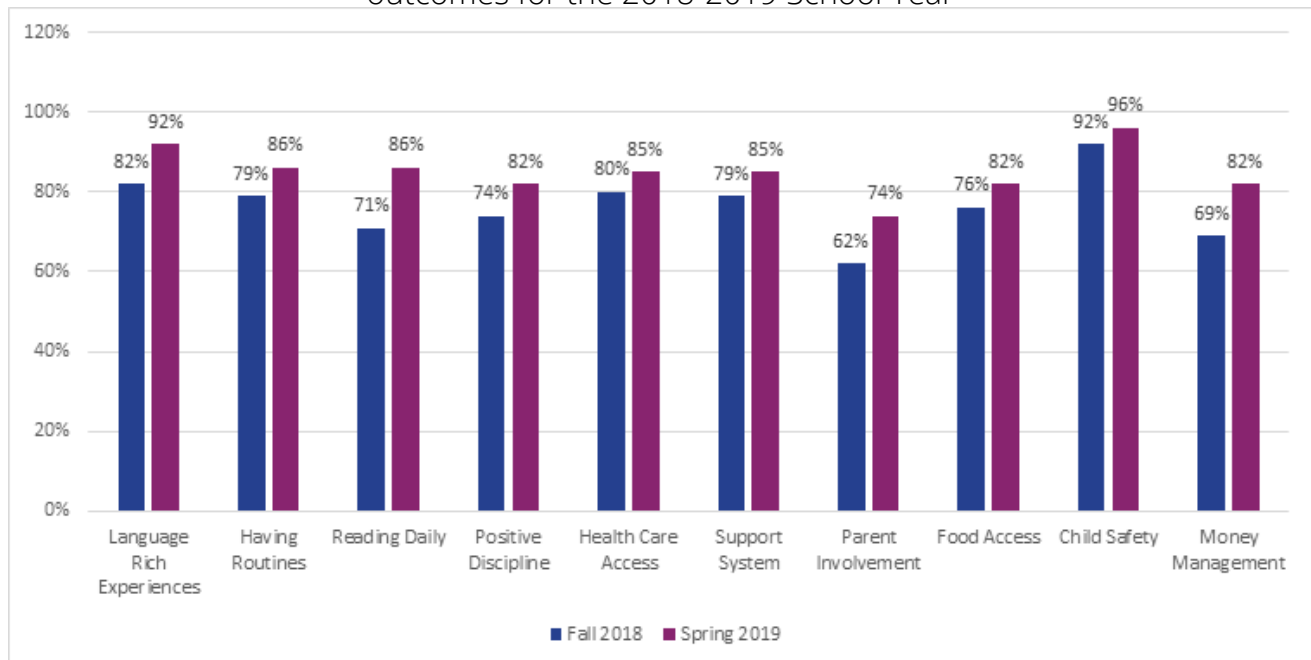
- Food and nutrition
- HousingEmployment
- Adult Education
- Parenting Education
- Mental Health
- Relationship Safety
- Child Safety
- Need for Emergency Services

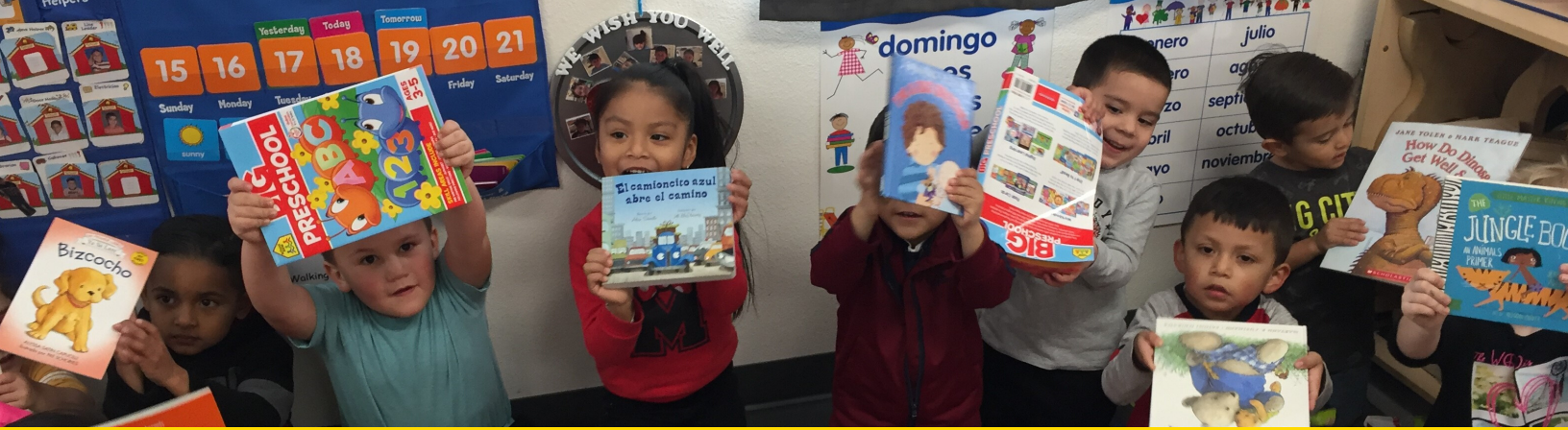


Every Wild Plum Center family participates in a Self-Sufficiency Analysis, as well as a review of progress made toward goals as outlined in an individualized Family Partnership Agreement. The graph below shows outcomes from the analysis, which shows increases in several areas of self-sufficiency for program families during the 2018-2019 school year.

Parent, Family, Child Engagement Outcomes

Wild Plum’s data shows significant increases toward achievement in 10 areas of family outcomes for the 2018-2019 School Year





TRANSITIONS

All transitions are opportunities for children’s growth, as they lay the foundation on which to develop the skills that are necessary for weathering change throughout life. Transitions from Early Head Start to Head Start and Head Start to kindergarten are crucial times for decision-making about children’s services. The transition process ensures service continuity, reduces family disruptions, prepares children for their program placements, and meets legal requirements (IDEA and ADA).

Transition plan for Early Head Start

For children transitioning from the home-based and center-based programs, there are several conversations that take place between Wild Plum Center staff and parents that begin six months in advance of the actual transition. First, the family is educated on the community preschool options available to them, including Head Start. If the family selects and qualifies for Head Start, staff begins to prepare the child for school by utilizing a “transition kit” that includes materials and supplies to help familiarize him/her to the preschool classroom. Early Head Start and preschool staff, together with parents, meet in the classroom for an orientation and exchange of necessary paperwork.

Our Transition Plan is designed to help children who are transitioning from one setting to the next. In order to make these transitions as seamless as possible, Wild Plum Center staff maintains close and consistent contact with the child and family through every step of the process. The transition process is individualized for each child and family.

Transition plan for 4 and 5 year olds going to kindergarten

Throughout the school year, we have on-going discussions about kindergarten with children and their parents. We encourage parents to continue to advocate for their children’s education and Wild Plum Center staff talk with families about the registration process, supporting them through enrollment, filling out scholarship requests, and with translation. Transition meetings with the school district are scheduled as needed and families are encouraged to visit the new school.

DEMOGRAPHICS

Early Head Start

Enrollment year: September

**TOTAL CUMULATIVE ENROLLMENT:
104 CHILDREN FROM 77 FAMILIES**

NUMBER OF CHILDREN

Under one year old:	26	EHS funded enrollment:	68
1 year old:	32	Center-based, 5 days a week:	32
2 years old:	21	Home-based:	32
3 years old:	18	Pregnant Women:	4
Pregnant Women:	7		

Head Start

Enrollment year: September

**TOTAL CUMULATIVE ENROLLMENT:
170 CHILDREN FROM 160 FAMILIES**

NUMBER OF CHILDREN

2 years old:	6	HS funded enrollment:	155
3 years old:	85		
4 years old:	79		

FEDERAL REPORTS

TOTAL AMOUNT OF PUBLIC AND PRIVATE FUNDS RECEIVED AND AMOUNT FROM EACH SOURCE:

Foundations	137,515.53
City of Longmont	147,197.64
Boulder County	63,036.00
St. Vrain Valley School District	151,380.00
Individuals	26,619.55
Churches	212,277.66
USDA	126,055.00
CCAP	120,608.25
Corporation	52,523.80
Head Start Grant Revenue\	2,369,391.00

TOTAL PUBLIC AND PRIVATE FUNDS RECEIVED: 3,406,604.43

PARENT INVOLVEMENT



Wild Plum Center makes every effort to support parents through their own journeys in parenthood and paths to self-sufficiency and lifelong learning. We create many opportunities for all parents and caregivers of children who are enrolled in our programs to become more engaged with their children and involved with their education.

These include:

- Participation in Parent Policy Council. This is one of Wild Plum Center's two governing bodies.
- Participation on one of our 4 Parent Committees that support, plan and implement Wild Plum projects.
- Participation on the Health Advisory Committee. This is a group of medical and healthcare professionals and parents who work to ensure that all Wild Plum Center children receive the health care they need.
- Parent/Child activities. These events include parent educational activities and workshops, gatherings in the local parks, dance performances, visits to museums and children's fun centers, recreation centers, and other community events.
- Parenting Classes teach skills and strategies to raise children who are happy, well-behaved, have good relationships, and are successful in school and in life.
- Infant/Child and Adult CPR and First Aid classes.
- Kindergarten transition support.
- In-home learning opportunities.
- Wild Plum understands the importance of Dads in their children's lives. Fathers (or other significant male family members) are included and supported in all aspects of the program.



COMMUNITY PARTNERSHIPS

Wild Plum Center has a long history of effective collaborative relationships with a variety of local non-profits, Boulder County/Colorado organizations, and foundations.

NON-PROFITS & ORGANIZATIONS

Ace Hardware
Altavita Memory Care Centre
Atria Centior Living Center
Bank of Colorado
Bridge Center for Play Therapy
Budget Home Center
Burg Simpson
Cable Labs
Dizzy's Family Fun Center
Domino's Pizza
Early Childhood Health Outdoors
EcoCycle
FoodStuff Etc.
Independent Financial
Hardy Boy Plants
Hoe and Hope
Husky Creative
Knit & Purl Group
Tinkermill
Wink Optical

FUNDERS & FOUNDATIONS

Elevations Credit Union Foundation
Nading Family Fund
Norris Family Foundation
Silicon Valley Community Foundation
Temple Hoyne Buell Foundation
Caring For Colorado
Longmont Community Foundation
Boulder Community Foundation



FINANCIALS

STATEMENT OF FINANCIAL POSITION

ASSETS	August 31,	
	2019	2018
CURRENT ASSETS		
Cash	\$ 671,783	\$ 499,537
Grants receivable	34,491	113,016
Prepaid insurance and refunds	18,836	6,262
Lease deposit	2,800	2,800
Total current assets	<u>727,910</u>	<u>621,615</u>
PROPERTY AND EQUIPMENT		
Building	1,449,442	850,590
Furniture and equipment	258,970	356,608
Construction in progress	-	571,297
Computer equipment	115,543	119,143
	<u>1,823,955</u>	<u>1,897,638</u>
Less accumulated depreciation	(764,584)	(802,343)
Net property and equipment	<u>1,059,371</u>	<u>1,095,295</u>
TOTAL ASSETS	<u>\$ 1,787,281</u>	<u>\$ 1,716,910</u>
LIABILITIES AND NET ASSETS		
CURRENT LIABILITIES		
Accounts payable	\$ 32,574	\$ 58,351
Deferred revenue	80,451	75,000
Payroll liabilities	39,628	43,057
Accrued vacation	71,249	69,833
Current portion of long-term debt	5,742	5,469
Total current liabilities	<u>229,644</u>	<u>251,710</u>
LONG-TERM LIABILITIES		
Mortgage payable less current portion	236,988	242,610
Total long-term liabilities	<u>236,988</u>	<u>242,610</u>
Total liabilities	<u>466,632</u>	<u>494,320</u>
COMMITMENTS AND CONTINGENCIES		
NET ASSETS		
Without donor restrictions	940,649	842,590
With donor restrictions (Note 9)		
Worthy Cause Awards	380,000	380,000
Total net assets with donor restrictions	<u>380,000</u>	<u>380,000</u>
Total net assets	<u>1,320,649</u>	<u>1,122,590</u>
TOTAL LIABILITIES AND NET ASSETS	<u>\$ 1,787,281</u>	<u>\$ 1,716,910</u>

STATEMENTS OF ACTIVITIES

	Years Ended August 31,	
	2019	2018
CHANGES IN NET ASSETS		
WITHOUT DONOR RESTRICTIONS		
Head Start grant proceeds received	\$ 1,416,813	\$ 1,381,392
Early Head Start grant proceeds received	1,013,085	987,999
Miscellaneous grants	99,549	8,000
Use of contributed facilities	347,846	349,022
Non-Head Start income	399,692	386,919
USDA reimbursements	135,586	126,055
Colorado preschool income	151,380	151,380
Contributed professional services and materials	173,000	291,994
Gain on sale of equipment	31,357	
Net assets released from restrictions	-	143,602
Total revenues and support	\$ 3,768,308	\$ 3,826,363
EXPENSES AND LOSSES		
Head Start program	\$ 1,770,499	\$ 1,953,057
Early Head Start program	1,019,501	1,029,956
Non-Head Start program	184,435	146,579
Head Start general and administrative expenses	234,181	144,655
Early Head Start general and administrative expenses	145,153	74,000
USDA School Lunch program	135,587	123,806
Head Start training and technical program	19,037	18,855
Early Head Start training and technical program	23,159	23,716
Non-Head Start general and administrative expenses	65,907	40,848
Total expenses	\$ 3,597,459	\$ 3,555,472
Depreciation expense	72,790	64,866
Loss on disposition of fixed assets	-	315
Total expenses and losses	\$ 3,670,249	\$ 3,620,653
Total changes in net assets without donor restrictions	98,059	205,710
CHANGES IN NET ASSETS		
WITH DONOR RESTRICTIONS		
Building contributions (Note 9)	-	30,500
Net assets released from restrictions	-	(143,602)
Total changes in net assets with donor restrictions	-	(113,102)
CHANGE IN NET ASSETS	\$ 98,059	\$ 92,608

BUDGET INFORMATION

2018-2019 SCHEDULE OF FEDERAL BUDGET VS. ACTUAL REVENUES AND EXPENSES

		Actual	(Unfavorable)
REVENUE:			
OHHS funds-			
Amount awarded	\$ 2,429,898	\$ 2,429,898	\$ -
Grantee's non-federal share-			
In-kind contributions		607,474	
Reimbursement-			
USDA (School Lunch Program)		135,587	
Total Revenue	<u>2,429,898</u>	<u>3,172,959</u>	
EXPENSES:			
OHHS share-			
Head Start program & Early Head Start program			
Direct Costs:			
Personnel	1,758,205	1,914,220	(156,015)
Fringe benefits	328,224	96,494	231,730
Supplies	64,703	23,279	41,424
Contractual	-	42,196	(42,196)
Other direct costs	236,570	572,300	(335,730)
Less non-federal expenditures contributed to Head Start program		(276,529)	276,529
	<u>2,387,702</u>	<u>2,371,960</u>	<u>15,742</u>
Training and technical assistance			
Other direct costs	<u>42,196</u>	<u>42,196</u>	
	<u>42,196</u>	<u>42,196</u>	
Total OHHS share	<u>\$ 2,429,898</u>	<u>\$ 2,414,156</u>	<u>\$ 15,742</u>
Grantee's non-federal share-			
Head Start program			
In-kind contributions-			
Facilities, professional services, supplies		\$ 520,846	
Volunteer services		86,628	
Total in-kind contributions		<u>607,474</u>	
Total grantee's non-federal share		<u>607,474</u>	
Reimbursable expense-			
USDA reimbursement for meals		<u>135,587</u>	
Total reimbursable expense		<u>135,587</u>	
Total expenses		<u>3,157,217</u>	
Excess of revenue over expenses		<u>\$ 15,742</u>	

2019-2020 PROPOSED BUDGET

REVENUES	
Grant revenue	\$2,717,397.00
Colorado Preschool Program	227,070.00
In-kind Income	618,041.00
USDA Income	169,467.85
Other Income	270,122.80
Total Income	\$4,002,098.65
EXPENSES	
Personnel	\$2,390,835.67
Fringe benefits	422,676.92
Supplies	163,404.47
Contractual	126,018.71
Other direct costs	844,466.88
Training and Technical Assistance	54,696.00
Total Expense	4,002,098.65

BOARD OF DIRECTORS

PRESIDENT: Bobbie Watson, Executive Director,
Early Childhood Council of Boulder County

VICE PRESIDENT: Holly Kammerer, Attorney, Burg Simpson

CONSULTANT TREASURER: Karissa Becklund, Vice President, Guaranty Bank

SECRETARY: Kenda Vaughan, Therapist, Private Practice

MEMBERS: Don Horton, Retired, Boulder County Public Health

Eileen Smith, Community Advocate

Erika Salas, Community Advocate

Rodrigo Leon, Engineer

Stephen Hoel, Principal, Blue Mountain Elementary

Wildfire Garmon, Parent, President of Policy Council

SHOW YOUR SUPPORT

MAKE A DONATION

Please consider contributing to the Wild Plum Center with a monetary donation. Without these gifts of financial support we would not be able to provide essential services to Longmont's low income families and their children. If you want to contribute to equity through education, visit www.wildplumcenter.org/donate

BECOME A COMMUNITY VOLUNTEER

Community volunteers are an important part of the Wild Plum Center! Volunteers help with classroom activities; assist with educational, health, and administrative projects; become "classroom readers"; organize Wild Plum Center community events; and more!

We appreciate all volunteer hours!

To find out more about becoming a donor or volunteer, contact us today!

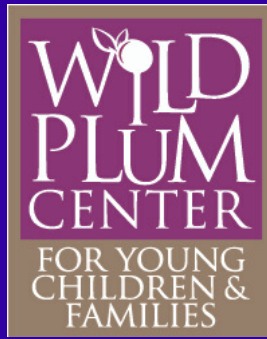
Keri Davis, Community Partnership Director

kerid@wildplumcenter.org

Call: 303-776-8523

Mailing address: 82 21st Avenue, Longmont, CO 80501

www.wildplumcenter.org



303-776-8523

www.wildplumcenter.org



Wild Plum Center is Longmont's leader in early childhood education and developmental services that ensure children enter school prepared to learn and families are equipped to be successful. We serve low-income families preparing them for a lifetime of learning and self-sufficiency and empower them to be advocates for their children's education.



Nourishing Minds. GROWING FUTURES.